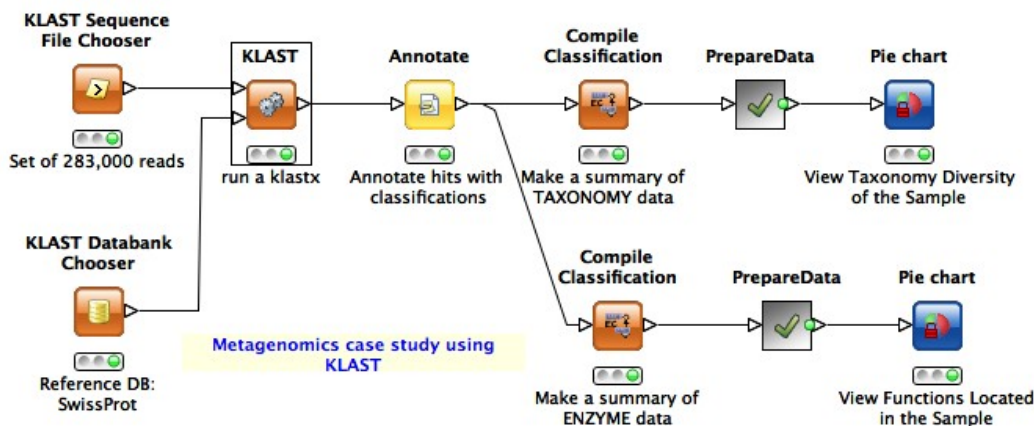


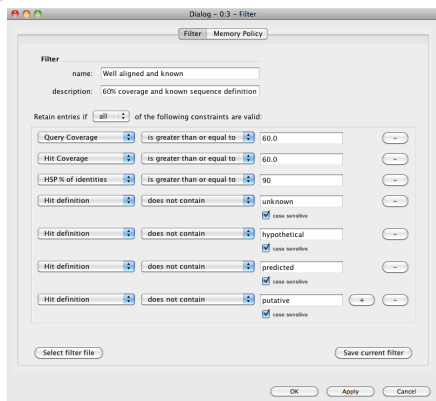
The KLAST plugin for KNIME



Design workflows

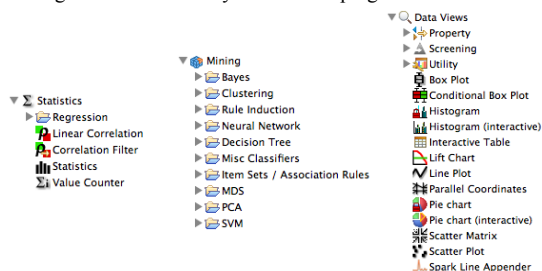
The KLAST plugin for KNIME provides nodes to setup databank exploration workflows relying on Korilog's high-performance sequence comparison tool. All these nodes are ready to handle large set of sequences and run workflows in batch mode.

Workflow's nodes configuration is done easily using graphical interfaces.



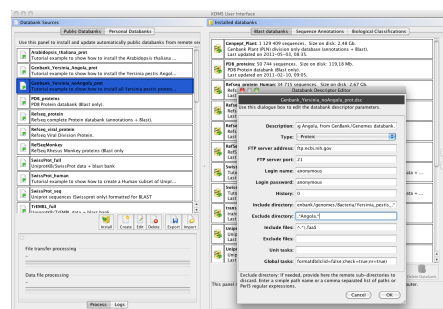
Create a filter

Data produced by these workflows can be exported or linked to existing KNIME data analysis nodes. R plugin is also available.



Prepare databanks

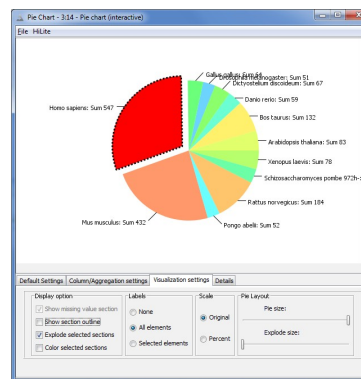
The Korilog KNIME extensions come with a databank manager software capable of creating annotated Blast databanks using public and personal data sets.



Databank Manager: prepare a databank installation using NCBI data sets

View results

Use KNIME standard data viewers to explore your results.



Taxonomy Classification data